

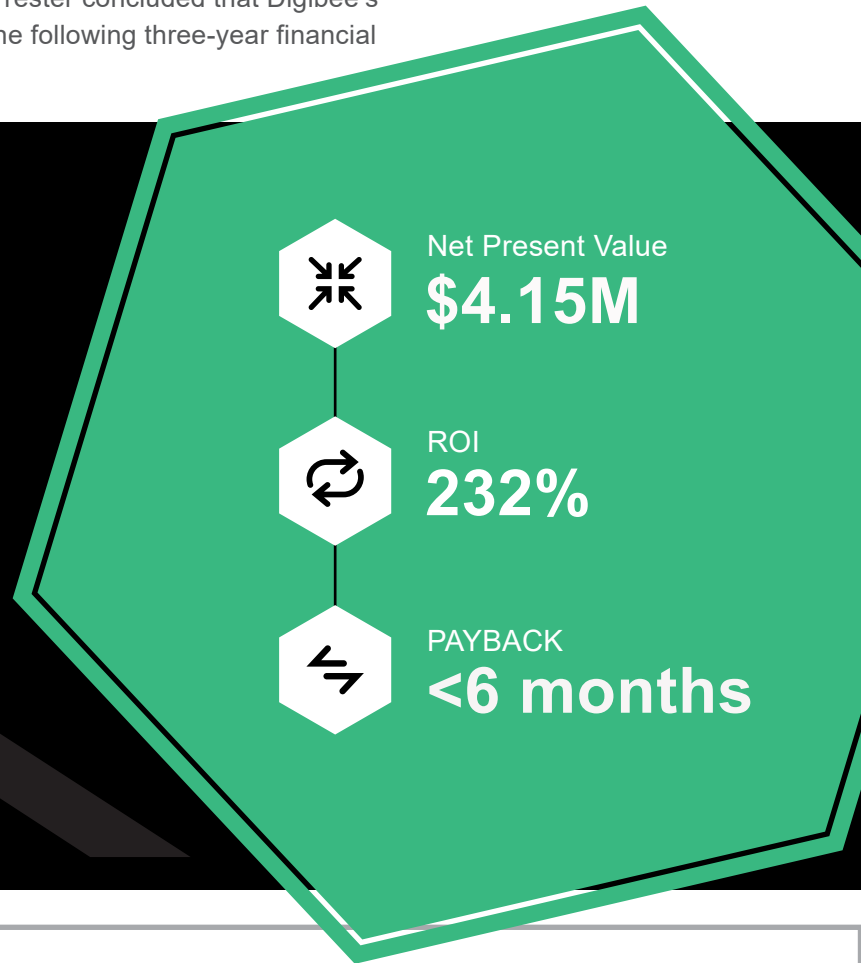
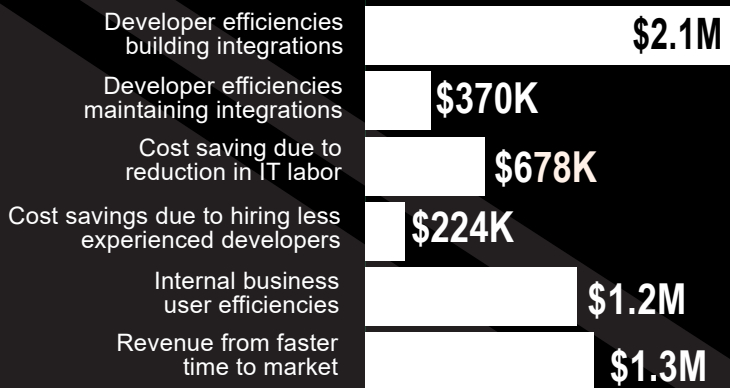
The Total Economic Impact™ Of Digibee's Enterprise Integration Platform As A Service (eiPaaS)

FORRESTER®

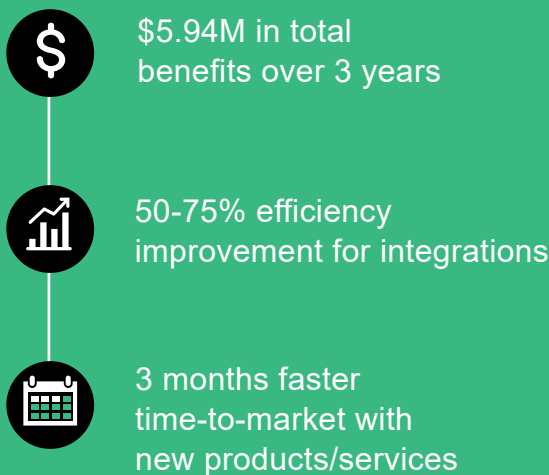
Through four customer interviews and data aggregation, Forrester concluded that Digibee's Enterprise Integration Platform As A Service (eiPaaS) has the following three-year financial impact.

SUMMARY OF BENEFITS

Three-year risk-adjusted



STUDY RESULTS BY THE NUMBERS



VOICE OF THE CUSTOMER

“Before Digibee it would have taken 300 hours to complete an integration, now it takes 60 hours.”

Technology architect, financial services

“Digibee not only helps us reduce costs, it enables us to bring more customers and more revenue to the company”

Sr. manager cloud enablement, telecom



Read the full study

This document is an abridged version of a case study commissioned by Digibee titled: The Total Economic Impact of Digibee's Enterprise Integration Platform As A Service (eiPaaS), November 2022.

© Forrester Research, Inc. All rights reserved.

Commissioned By

